

Butterfly Valve Series

Butterfly Valve Series

蝶阀系列

蝶阀系列

产品概述 Product overview

- 复合金属密封圈的弹性特性使得阀门具有零泄漏性能。
- 扭矩密封确保阀门持续的双向零泄漏特性。
- 直角旋转无摩擦设计是通过一个独特的三偏心原理来实现，它消除90°开关旋转中阀座与密封圈之间的摩擦。
- STL-体式硬面阀座可满足许多工况要求，使用寿命，维修方便。
- 一体式铸造(板焊)阀体，结构长度符合ISO5752、ASME B16.10和API609可替换高性能蝶阀以及其他种类的阀门，安装简单、灵活。
- 全金属结构加上零泄漏性能，使阀门具有‘本质防火安全’特性。
- 阀杆防吹出设计安全可靠，完全符合API609的要求。
- 阀杆上的阀位指示器以及顶部安装法兰有利于蝶阀位置指示。
- 三偏心蝶阀的阀杆采用一根通轴式结构，阀杆与蝶板连接采用键或销键组全。

- The elastic property of the composite metal seal makes the valve have zero leakage performance.
- Torque seal ensures constant bidirectional zero leakage characteristics of the valve.
- The right angle rotary friction free design is achieved by a unique three eccentric principle that eliminates friction between the valve seat and the ring in the 90° switch rotation.
- STL-type hard faced seat can meet the working requirements of many, service life, convenient maintenance.
- Integral casting (plate welding) valve body, the length of the structure conforms to ISO5752, ASME B16.10 and API609, can replace high-performance butterfly valve and other types of valves, installation is simple and flexible.
- All metal structure with zero leakage performance, so that the valve has 'intrinsic fire safety' characteristics.
- Stem blowout prevention design is safe and reliable, fully meet the requirements of API609.
- The valve position indicator on the stem rod and the top mounting flange are helpful for the position indication of the disposition.
- Three eccentric butterfly valve stem adopts a through shaft structure, stem and butterfly plate connection, with key or key group

防吹出阀杆 Blow-out proof valve stem

正丰系列蝶阀采用双重防阀杆吹出设计，符合API609及ANSI B31.1的要求

上部：阀杆下端开槽，嵌入对开环，防止阀杆吹出。

底部：阀杆设计成台阶轴，与压套配合，防止阀杆吹出。

Zhengfeng series of butterfly valves using dual anti-stem blowing design, in line with the requirements of API609 and ANSI B31.1
 Upper part: slotted at the bottom of the stem and inserted into the ring to prevent the stem from blowing out.
 Bottom: the stem is designed as a stepped shaft and fits with the sleeve to prevent the valve stem from blowing out.

低开关扭矩 Low switching torque

正丰系列蝶阀采用三偏心和柔性的多层金属及石墨相叠的密封副设计既保证了良好的密封性能，也降低了操作扭矩。

Zhengfeng series butterfly valve adopts three eccentric and flexible multilayer metal and graphite overlapping seal design, which ensures good sealing performance and reduces operating torque.

零泄漏 Zero Leakage

多层密封副自定位设计，满足API598的零泄漏要求。

Self sealing design of multi layer sealing pairs to meet the requirement of API598's zero leakage.

三偏心蝶阀设计特色 Design features of triple offset butterfly valve

第一偏心：阀杆旋转中心与阀座中心线偏离，确保阀座与碟板间的紧密密封。

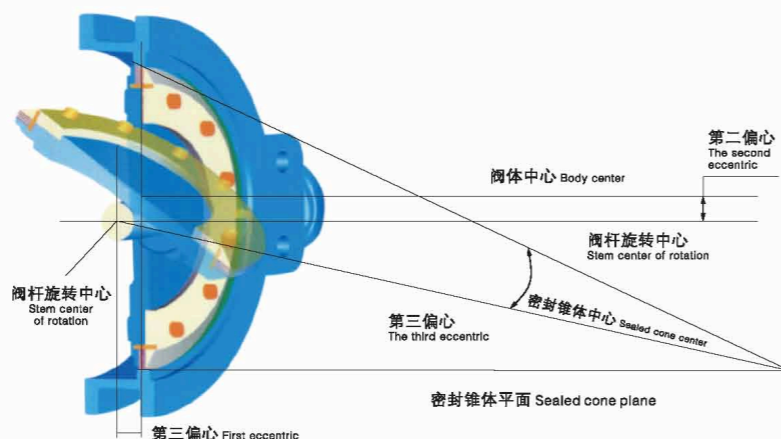
第二偏心：阀杆旋转中心与阀座中心偏离，阀门开启时，可以使碟板迅速脱离密封面。

第三偏心：密封圆锥体中心与阀门中心线偏离，完全消除了碟板与阀座之间的摩擦。

First eccentric: the center of the stem rotates off from the centerline of the seat to ensure tight seal between the seat and the disc.

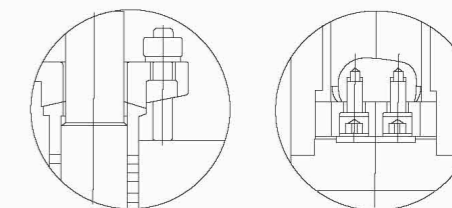
Second eccentric: stem rotation center and seat center deviation, when the valve opens, can make the plate quickly separated from the sealing surface.

Third eccentric: the center of the cone of the sealing ring deviates from the central line of the valve, thus completely eliminating the friction between the plate and the valve seat.



防火设计 Fire safe design

金属及多层石墨相叠密封副设计，固有的防火功能，满足API607防火要求。
 Metal and multilayer graphite overlapping seal design, inherent fire protection function, meet the requirements of API607 fire protection.



上部防吹出结构
Upper blow-out proof structure

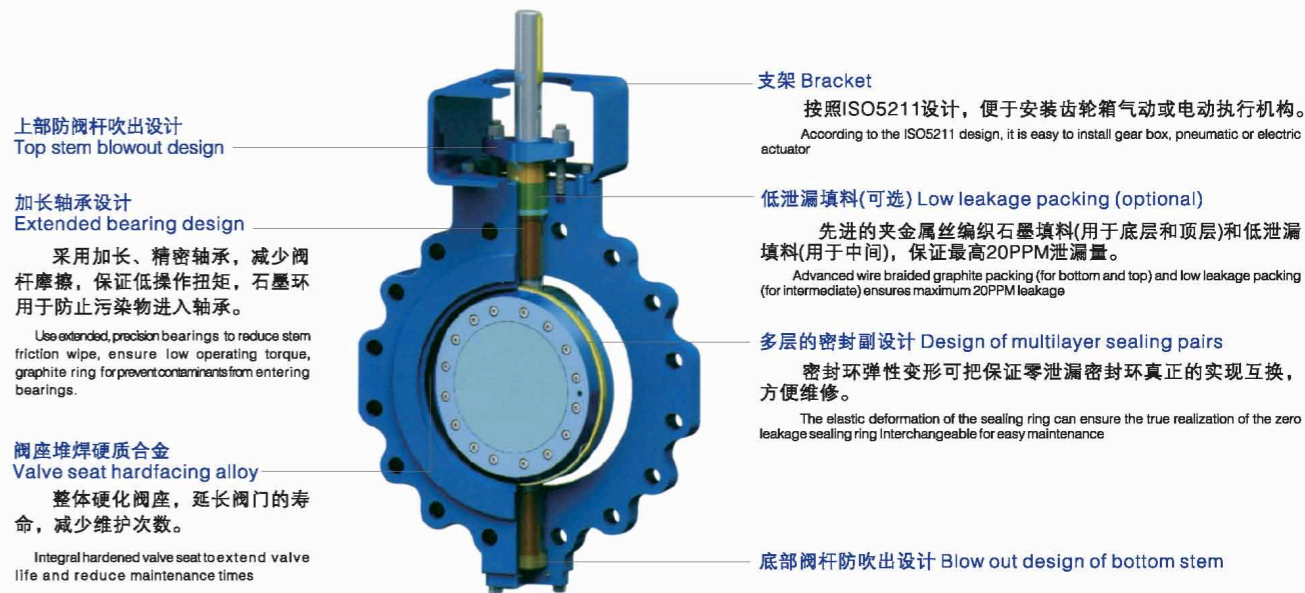
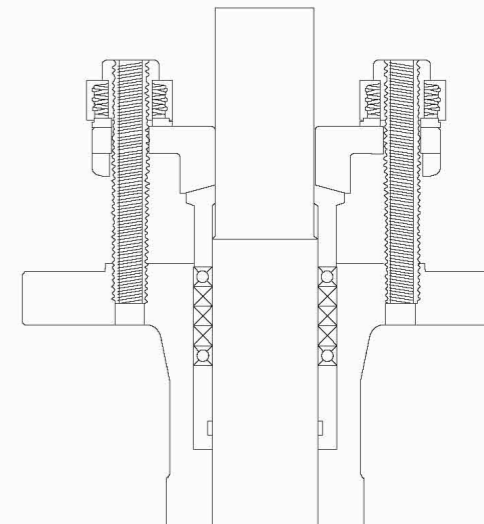
底部防吹出结构
At the bottom of the blow-out proof structure

低泄漏阀杆密封 Low leakage stem seal

低泄漏阀杆密封设计允许最高20PPM*的泄漏量。

1. 阀杆由阀杆轴承全程导向和定位，避免了因侧向压力冲击而引起的阀杆侧向偏移而导致阀杆填料处泄漏。
2. 填料预压缩处理，上下端使用编织石墨绳，中间使用成形石墨环，增强防泄漏性能。
3. 阀杆和填料函表面粗糙度控制：阀杆在Ra0.4~Ra0.8之间；填料函为Ra1.6。
4. 可选择动载的压盖法兰使填料保持恒定持续的压缩，减少阀杆填料密封处的泄漏。
5. 根据用户要求，阀杆密封可按照Shell MESC77/312和TA-Luft标准设计。
*20PPM按照氮气吸入法确定。

- Low leakage stem seal design allows maximum 20PPM* leakage
1. The stem is guided and positioned by the stem bearing to avoid the stem caused by lateral pressure impact lateral displacement results in leakage of stem packing.
 2. Packing pre compression treatment, the upper and lower ends are made of braided graphite rope, and the middle formed graphite ring is used to strengthen leak proof performance.
 3. Stem and stuffing box surface roughness control: stem in Ra0.4 ~ Ra0.8 between; stuffing box for Ra1.6.
 4. Optional dynamic gland flange, so that the packing to maintain constant constant compression, reducing stem packing seal leakage at.
 5. according to user requirements, stem seal can be designed according to Shell, MESC77/312 and TA-Luft standards.
*20PPM is determined by nitrogen inhalation.



Flanged Triple Offset Butterfly Valve

法兰式三偏心蝶阀



Breakthrough technology, creating value!

突破科技 创造价值!

我们时刻追求，设计的创新；我们永远确保，品质的优良；我们不断完善，周全的服务。
We always seek, design innovation; we always ensure that the quality of good; we continue to improve, comprehensive service.

Flanged Triple Offset Butterfly Valve

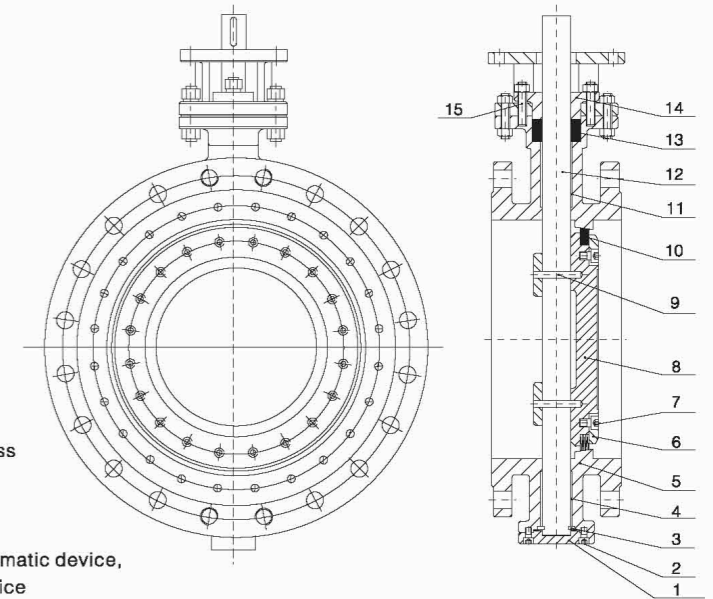
法兰式三偏心蝶阀

应用规范 Application Of Norms

设计标准：API609、JB8527、DIN2559、EN593
Design standard: API609、JB8527、DIN2559、EN593

产品范围 Application specification

- 1、压力范围：CLASS 150Lb-1500Lb PN6-PN150
 - 2、公称口径：NPS 2-80" DN50-2000mm
 - 3、主体材料：碳钢、不锈钢、双相不锈钢、合金钢、镍合金钢
 - 4、连接形式：法兰式
 - 5、工作温度：-29℃~350℃
 - 6、操作方式：手柄、蜗轮、电动装置、气动装置、液动装置、气液联动装置
- 1, Pressure range: CLASS 150Lb-1500Lb PN6-PN150
 - 2, Nominal diameter: NPS 2-80" DN50-2000mm
 - 3, Main material: carbon steel, stainless steel, duplex stainless steel, alloy steel, nickel alloy steel
 - 4, Connection form: flange type
 - 5, Working temperature: -29℃~350℃
 - 6, Operation mode: handle, worm gear, electric device, pneumatic device, hydraulic device, gas-liquid linkage device



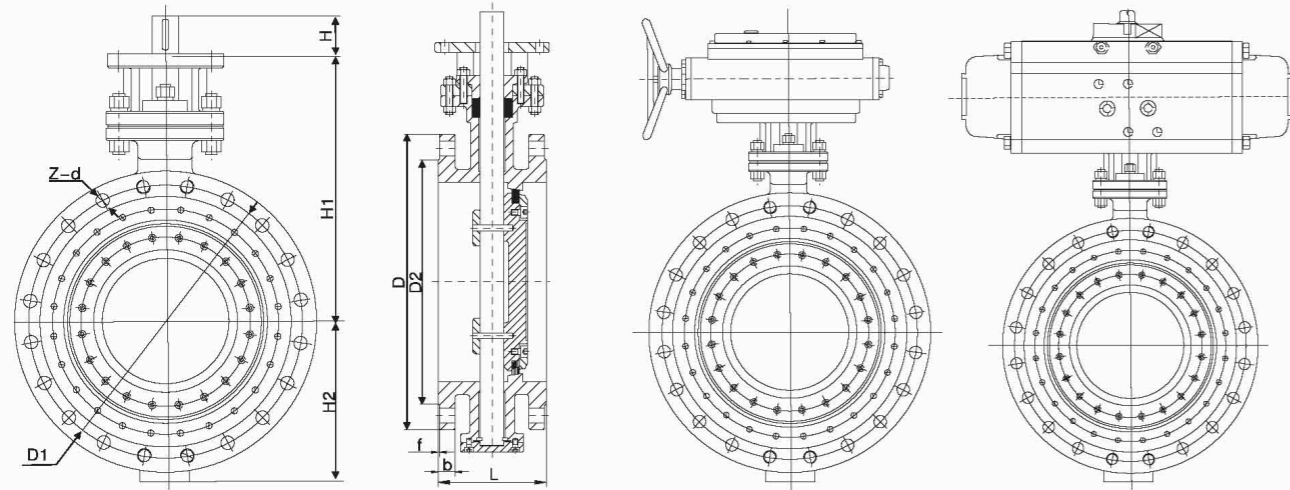
主要零件材料 Material for main parts

序号 NO	零件名称 Parts name	材料 Material	序号 NO	零件名称 Parts name	材料 Material
1	端盖 End cap	ASTM A105		密封圈 Seal ring	ASTM A276 304 + Graphite
2	内六角螺钉 Inner six angle screw	ASTM A193 B7		内六角螺钉 Inner six angle screw	ASTM A193 B7
3	垫片 Gasket	柔性石墨+304 Flexible graphite		压环 Pressure ring	ASTM A105
4	下轴套 Lower bushing	304	9	销钉 Pin	ASTM A193 B7
5	阀体 Body	ASTM A216 WCB	10	右侧密封圈 Right sealing ring	柔性石墨 Flexible graphite
6	压圈 Retaining Ring	ASTM A105	11	上轴套 Upper shaft sleeve	304
7	内六角螺钉 Inner six angle screw	ASTM A193 B7	12	阀杆 Stem	17-4PH
8	蝶板组件 Disc assembly	部件图 Component diagram	13	填料压盖 Gland	ASTM A216 WCB
	蝶板 Disc	ASTM A216 WCB	14	支架 Bracket	ASTM A216 WCB
	调整垫 Adjusting pad	柔性石墨 Flexible graphite	15	双头螺栓 Double bolt	ASTM A193 B7

注释：口径≤24"根据 ANSI B16.5 口径>24"根据 ANSI B16.47 Series B
Notes: Size≤24" according to ANSI B16.5, Size>24" according to ANSI B16.47 Series B

Flanged Triple Offset Butterfly Valve

法兰式三偏心蝶阀



外形及连接尺寸 Appearance and connect size (mm) PN10

公称通径 Nominal diameter	L	D	D1	D2	b	f	Z-d	M	H	H1	H2
50	108	165	125	102	20	3	4-18	M16	50	200	75
80	114	200	160	138	20	3	8-18	M16	50	226	98
100	127	220	180	158	22	3	8-18	M16	50	250	130
125	140	250	210	188	22	3	8-18	M16	50	295	165
150	140	285	240	212	24	3	8-22	M20	55	315	175
200	152	340	295	268	24	3	8-22	M20	60	380	220
250	165	395	350	320	26	3	12-22	M20	65	405	250
300	178	445	400	370	26	4	12-22	M20	65	480	300
350	190	505	460	430	26	4	16-22	M20	70	545	330
400	216	565	515	482	26	4	16-26	M24	70	550	360
450	222	615	565	532	28	4	20-26	M24	95	620	380
500	229	670	620	585	28	4	20-26	M24	100	680	410
600	267	780	725	685	34	5	20-30	M27	105	750	460
700	292	895	840	800	34	5	24-30	M27	105	820	530
800	318	1015	950	905	36	5	24-33	M30	110	910	610
900	330	1115	1050	1005	38	5	28-33	M30	130	930	640
1000	410	1230	1160	1110	38	5	28-36	M33	140	980	720
1200	470	1455	1380	1330	44	5	32-39	M36	160	1220	820
1400	530	1675	1590	1535	48	5	36-42	M39	170	1310	930
1600	600	1915	1820	1760	52	5	40-48	M45	180	1460	980
1800	670	2115	2020	1960	56	5	44-48	M45	190	1560	1090
2000	760	2325	2230	2170	60	5	48-48	M45	190	1670	1190

Flanged Triple Offset Butterfly Valve

法兰式三偏心蝶阀

外形及连接尺寸 Appearance and connect size (mm) PN16

公称通径 Nominal diameter	L	D	D1	D2	b	f	Z-d	M	H	H1	H2
50	108	165	125	102	20	3	4-18	M16	50	200	75
80	114	200	160	138	20	3	8-18	M16	50	226	98
100	127	220	180	158	22	3	8-18	M16	50	250	130
125	140	250	210	188	22	3	8-18	M16	55	295	165
150	140	285	240	212	24	3	8-22	M20	60	315	175
200	152	340	295	268	24	3	12-22	M20	65	380	220
250	165	405	355	320	26	3	12-26	M24	65	405	250
300	178	460	410	378	28	4	12-26	M24	70	480	300
350	190	520	470	428	30	4	16-26	M24	70	545	330
400	216	580	525	490	32	4	16-30	M27	100	550	360
450	222	640	585	550	40	4	20-30	M27	100	620	380
500	229	715	650	610	44	4	20-33	M30	105	680	410
600	267	840	770	725	54	5	20-36	M33	105	750	460
700	292	910	840	795	40	5	24-36	M33	110	820	530
800	318	1025	950	900	42	5	24-39	M36	130	910	610
900	330	1125	1050	1000	44	5	28-39	M36	140	930	640
1000	410	1255	1170	1115	46	5	28-42	M39	140	980	720
1200	470	1485	1390	1330	52	5	32-48	M45	170	1220	820
1400	530	1685	1590	1530	58	5	36-48	M45	180	1310	930
1600	600	1930	1820	1750	64	5	40-55	M52	190	1460	980
1800	670	2130	2020	1950	68	5	44-55	M52	200	1560	1090
2000	760	2345	2230	2150	70	5	48-60	M56	200	1670	1190

外形及连接尺寸 Appearance and connect size (mm) PN25

公称通径 Nominal diameter	L	D	D1	D2	b	f	Z-d	M	H	H1	H2
50	108	165	125	102	20	3	4-18	M16	50	200	75
80	114	200	160	138	24	3	8-18	M16	50	226	98
100	127	235	190	162	24	3	8-22	M20	50	250	130
125	140	270	220	188	26	3	8-26	M24	55	295	165
150	140	300	250	218	28	3	8-26	M24	60	315	175
200	152	360	310	278	30	3	12-26	M24	65	380	220
250	165	425	370	335	32	3	12-30	M27	65	405	250
300	178	485	430	395	34	4	16-30	M27	70	480	300
350	190	555	490	450	38	4	16-33	M30	70	545	330
400	216	620	550	505	40	4	16-36	M33	100	550	360
450	222	670	600	555	46	4	20-36	M33	100	620	380
500	229	730	660	615	48	4	20-36	M33	105	680	410
600	267	845	770	720	58	5	20-39	M36	105	750	460
700	292	960	875	820	50	5	24-42	M39	110	820	530
800	318	1085	990	930	54	5	24-48	M45	130	910	610
900	330	1185	1090	1030	58	5	28-48	M45	140	930	640
1000	410	1320	1210	1140	62	5	28-55	M52	140	980	720
1200	470	1530	1420	1350	70	5	32-55	M52	170	1220	820
1400	530	1755	1640	1560	76	5	36-60	M56	180	1310	930
1600	600	1975	1860	1780	84	5	40-60	M56	190	1460	980
1800	670	2195	2070	1985	90	5	44-68	M64	200	1560	1090
2000	760	2425	2300	2210	96	5	48-68	M64	200	1670	1190

Flanged Triple Offset Butterfly Valve

法兰式三偏心蝶阀

外形及连接尺寸 Appearance and connect size (mm) PN40

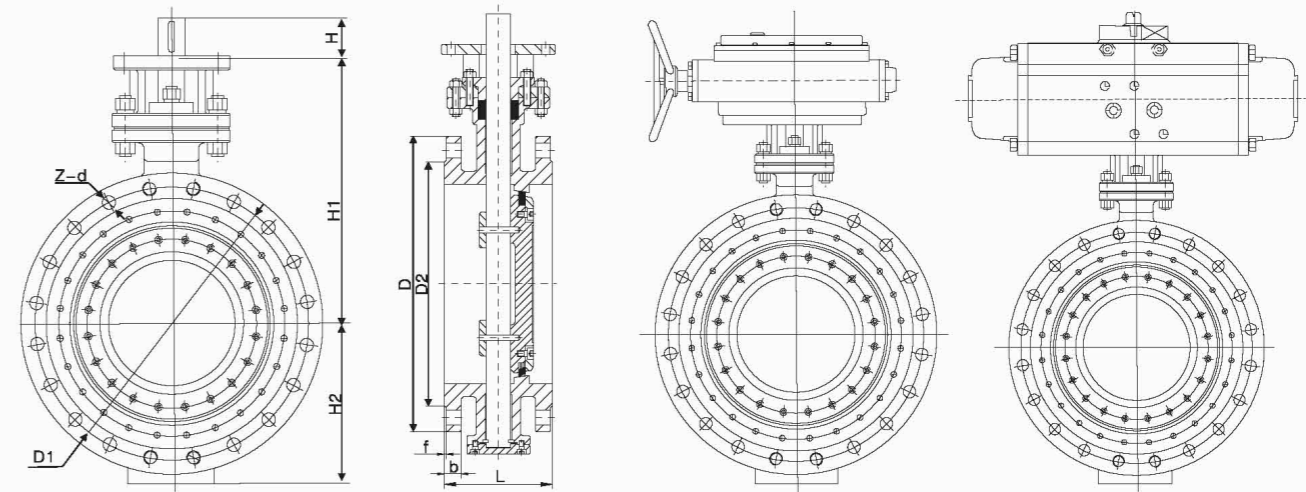
公称通径 Nominal diameter	L	D	D1	D2	b	f	Z-d	M	H	H1	H2
50	150	165	125	102	20	3	4-18	M16	50	200	75
80	180	200	160	138	24	3	8-18	M16	50	226	98
100	190	235	190	162	24	3	8-22	M20	55	250	130
125	200	270	220	188	26	3	8-26	M24	60	295	165
150	210	300	250	218	28	3	8-26	M24	65	315	175
200	230	375	320	285	34	3	12-30	M27	65	380	220
250	250	450	385	345	38	3	12-33	M30	70	405	250
300	270	515	450	410	42	4	16-33	M30	70	480	300
350	290	580	510	465	46	4	16-36	M33	100	545	330
400	310	660	585	535	50	4	16-39	M36	100	550	360
450	330	685	610	460	57	4	20-39	M36	105	620	380
500	350	755	670	615	57	4	20-42	M39	105	680	410
600	390	890	795	735	72	5	20-48	M45	110	750	460

外形及连接尺寸 Appearance and connect size (mm) PN63

公称通径 Nominal diameter	L	D	D1	D2	b	f	Z-d	M	H	H1	H2
50	150	180	135	102	26	3	4-22	M20	50	200	75
80	180	215	170	138	28	3	8-22	M20	50	226	98
100	190	250	200	162	30	3	8-26	M24	55	250	130
125	200	295	240	188	34	3	8-30	M27	65	295	165
150	210	345	280	218	36	3	8-33	M30	65	315	175
200	230	415	345	285	42	3	12-36	M33	70	380	220
250	250	470	400	345	46	3	12-36	M33	70	405	250
300	270	530	460	410	52	4	16-36	M33	100	480	300
350	290	600	525	465	56	4	16-39	M36	100	545	330
400	310	670	585	535	60	4	16-42	M39	105	550	360
500	350	800	705	615	68	4	16-48	M45	110	680	410
600	390	930	820	735	76	5	16-56	M52	110	750	460

Flanged Triple Offset Butterfly Valve

法兰式三偏心蝶阀



外形及连接尺寸 Appearance and connect size CLASS 150Lb

公称通径 Nominal diameter	L	D	D1	D2	b	f	Z-d	M(in)	H	H1	H2
2	50	108	120.5	92	18	2	4-19	5/8	50	175	75
3	80	114	152.5	127	22	2	4-19	5/8	50	195	110
4	100	127	190.5	157	24	2	8-19	5/8	50	225	135
5	125	140	216	186	24	2	8-22	3/4	55	250	155
6	150	140	241.5	216	26	2	8-22	3/4	60	285	185
8	200	152	298.5	270	29	2	8-22	3/4	65	330	225
10	250	165	362	324	31	2	12-25	7/8	65	360	255
12	300	178	432	381	32	2	12-25	7/8	70	420	305
14	350	190	476	413	35	2	12-29	1	70	460	325
16	400	216	540	470	37	2	16-29	1	100	490	360
18	450	222	578	533	40	2	16-32	1-1/8	100	525	370
20	500	229	635	584	43	2	20-32	1-1/8	105	580	410
24	600	267	749.5	692	48	2	20-35	1-1/4	105	640	480
28	700	292	835	762	43.7	2	44-22	3/4	110	660	550
32	800	318	900.1	864	45.3	2	48-22	3/4	130	715	600
36	900	330	1009.6	972	51.5	2	44-26	7/8	140	780	660
40	1000	410	1175	1080	54.8	2	44-30	1	140	830	640
48	1200	470	1335.1	1289	64	2	44-33	1-1/8	170	960	830
56	1400	530	1543	1492	72	2	60-33	1-1/8	180	1070	970

Flanged Triple Offset Butterfly Valve

法兰式三偏心蝶阀

外形及连接尺寸 Appearance and connect size CLASS 300 Lb

公称通径 Nominal diameter	L	D	D1	D2	b	f	Z-d	M(in)	H	H1	H2	
2	50	108	165	127	92	23	2	8-19	5/8	50	185	135
3	80	114	210	168.5	127	29	2	8-22	3/4	50	205	150
4	100	127	255	200	157	32	2	8-22	3/4	55	230	185
5	125	140	280	235	186	35	2	8-22	3/4	65	250	185
6	150	140	320	270	216	37	2	12-22	3/4	65	310	210
8	200	152	380	330	270	42	2	12-26	7/8	70	345	240
10	250	165	445	387.5	324	48	2	16-29	1	70	395	280
12	300	178	520	451	381	51	2	16-32	1-1/8	100	450	315
14	350	190	585	514.5	413	54	2	20-32	1-1/8	100	490	350
16	400	216	650	571.5	470	58	2	20-35	1-1/4	105	530	350
18	450	222	710	628.5	533	61	2	24-35	1-1/4	110	580	410
20	500	229	775	686	584	64	2	24-35	1-1/4	110	630	460
24	600	267	915	813	692	70	2	24-41	1-1/2	130	710	510
28	700	430	920	857.2	787	87.5	2	36-36	1-1/4	140	720	430
32	800	470	1055	977.9	902	101.6	2	32-42	1-1/2	170	780	455
36	900	510	1170	1089	1010	101.6	2	32-45	1-5/8	170	860	475
40	1000	550	1275	1190.6	1114	114.3	2	40-45	1-5/8	190	930	455
48	1200	630	1510	1416	1327	127	2	40-51	1-7/8	190	1080	860

外形及连接尺寸 Appearance and connect size CLASS 600 Lb

公称通径 Nominal diameter	L	D	D1	D2	b	f	Z-d	M(in)	H	H1	H2	
2	50	150	165	127	92	26	7	8-19	5/8	55	205	125
3	80	180	210	168.5	127	32	7	8-22	3/4	55	235	127
4	100	190	255	216	157	38	7	8-26	7/8	60	270	160
5	125	200	280	267	186	45	7	8-29	1	65	315	285
6	150	210	320	292	216	48	7	12-29	1	70	340	196
8	200	230	380	349	270	56	7	12-32	1-1/8	70	390	221
10	250	250	445	432	324	64	7	16-35	1-1/4	70	450	256
12	300	270	520	489	381	67	7	20-35	1-1/4	100	500	307
14	350	290	585	527	413	70	7	20-39	1-3/8	100	530	330
16	400	310	650	603	470	76	7	20-42	1-1/2	110	600	391
18	450	330	710	654	533	83	7	20-45	1-5/8	110	630	400
20	500	350	775	724	584	89	7	24-45	1-5/8	130	670	352
24	600	390	915	838	692	102	7	24-51	1-7/8	140	730	513

Wafer Type Triple Offset Butterfly Valve

对夹式三偏心蝶阀



Breakthrough technology, creating value!

突破科技 创造价值!

我们时刻追求，设计的创新；我们永远确保，品质的优良；我们不断完善，周全的服务。
 We always seek, design innovation; we always ensure that the quality of good; we continue to improve, comprehensive service.



Wafer Type Triple Offset Butterfly Valve

对夹式三偏心蝶阀

应用规范 Application Of Norms

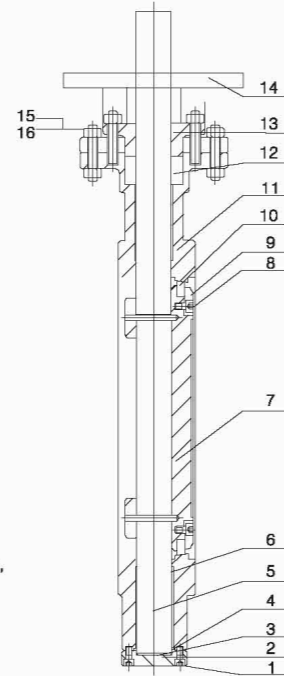
设计标准: API609、JB/8527、DIN 2559、EN593
 Design standard: API609、JB/8527、DIN 2559、EN593

产品范围 Product range

- 1、压力范围: CLASS 150Lb-1500Lb PN6-PN150
- 2、公称口径: NPS 2-80" DN50-2000mm
- 3、主体材料: 碳钢、不锈钢、双相不锈钢、合金钢、镍合金钢
- 4、连接形式: 对夹式
- 5、工作温度: -29℃~350℃
- 6、操作方式: 手柄、蜗轮、电动装置、气动装置、液动装置、气液联动装置;

- 1, Pressure range: CLASS 150Lb-1500Lb PN6-PN150
- 2, Nominal diameter: NPS 2-80" DN50-2000mm
- 3, Main material: carbon steel, stainless steel, duplex stainless steel, alloy steel, nickel alloy steel

- 4, Connection form: wafer type
- 5, Working temperature: -29℃~350℃
- 6, Operation mode: handle, worm gear, electric device, pneumatic device, hydraulic device, Gas-liquid linkage device;

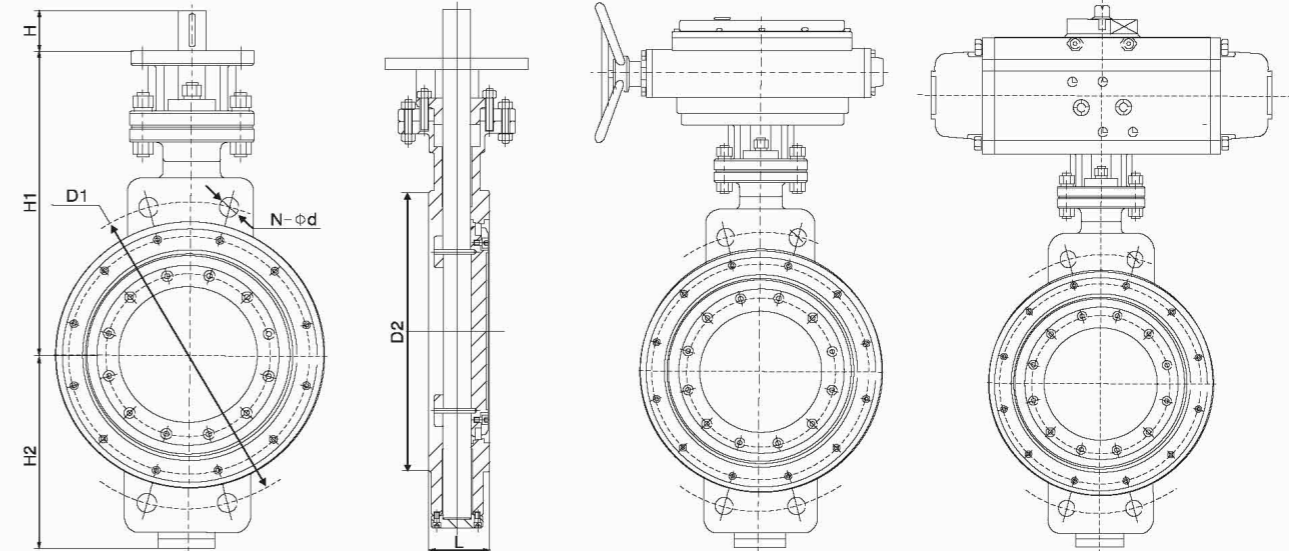


主要零件材料 Material for main parts

序号 Serial number	零件名称 Part name	材料 Material Science
1	螺钉 Screw	B8M-CL2
2	法兰 Flange	SS316
3	垫片 Gasket	SS316+石墨 Graphite
4	防冲出环 Anti surge ring	S31803
5	阀杆 Stem	17-4PH
6	轴套 Axle sleeve	S31803
7	蝶板 Disc	CF8M
8	内六角螺钉 Inner six angle screw	SS316
9	蝶板压环 Retaining Ring	SS316
10	密封圈 Seal ring	SS316+石墨 Graphite
11	阀体 Body	CF8M
12	填料 Packing	石墨 Graphite
13	压盖 Gland	CF8M
14	支架 Bracket	A216WCB
15	螺栓 Bolt	B8M-CL2
16	螺母 Nut	8M-CL2

Wafer Type Triple Offset Butterfly Valve

对夹式三偏心蝶阀



外形及连接尺寸 Appearance and connect size (mm)

PN10

公称口径 Nominal diameter	L	D1	D2	N-d	H	H1	H2
50	43	125	102	4-18	50	200	75
80	49	160	138	4-18	50	226	98
100	56	180	158	4-18	50	250	130
125	64	210	188	4-18	50	295	150
150	70	240	212	4-22	55	315	165
200	71	295	268	4-22	60	380	210
250	76	350	320	4-22	65	405	245
300	83	400	370	4-22	65	460	280
350	92	460	430	4-M20	70	525	315
400	102	515	482	4-M24	70	540	345
450	114	565	532	4-M24	95	620	380
500	127	620	585	4-M24	100	650	410
600	154	725	685	4-M27	105	690	460
700	165	840	800	4-M27	105	780	510
800	190	950	905	4-M30	110	860	580
900	203	1050	1005	4-M30	130	900	630
1000	216	1160	1110	4-M33	140	980	700
1200	254	1380	1330	4-M36	160	1100	810
1400	279	1590	1535	4-M39	170	1200	930
1600	318	1820	1760	4-M45	180	1330	980
1800	356	2020	1960	4-M45	190	1450	1050
2000	406	2230	2170	4-M45	190	1560	1150

Wafer Type Triple Offset Butterfly Valve

对夹式三偏心蝶阀

外形及连接尺寸 Appearance and connect size (mm) PN16

公称直径 Nominal diameter	L	D1	D2	N-d	H	H1	H2
50	43	125	102	4-18	50	200	75
80	49	160	138	4-18	50	226	98
100	56	180	158	4-18	50	250	130
125	64	210	188	4-18	55	295	150
150	70	240	212	4-22	60	315	165
200	71	295	268	4-22	65	380	210
250	76	355	320	4-26	65	405	245
300	83	410	378	4-26	70	460	280
350	92	470	428	4-M24	70	525	315
400	102	525	490	4-M27	100	540	345
450	114	585	550	4-M27	100	620	380
500	127	650	610	4-M30	105	650	410
600	154	770	725	4-M33	105	690	460
700	165	840	795	4-M33	110	780	510
800	190	950	900	4-M36	130	860	580
900	203	1050	1000	4-M36	140	900	630
1000	216	1170	1115	4-M39	140	980	700
1200	254	1390	1330	4-M45	170	1100	810
1400	279	1590	1530	4-M45	180	1200	930
1600	318	1820	1750	4-M52	190	1330	980
1800	356	2020	1950	4-M52	200	1450	1050
2000	406	2230	2150	4-M56	200	1560	1150

外形及连接尺寸 Appearance and connect size (mm) PN25

公称直径 Nominal diameter	L	D1	D2	N-d	H	H1	H2
50	43	125	102	4-18	50	200	75
80	49	160	138	4-18	50	226	98
100	56	190	162	4-22	50	250	130
125	64	220	188	4-26	55	295	150
150	70	250	218	4-26	60	315	165
200	71	310	278	4-26	65	380	210
250	76	370	335	4-30	65	405	245
300	83	430	395	4-M27	70	460	280
350	92	490	450	4-M30	70	525	315
400	102	550	505	4-M33	100	540	345
450	114	600	555	4-M33	100	620	380
500	127	660	615	4-M33	105	650	410
600	154	770	720	4-M36	105	690	460
700	165	875	820	4-M39	110	780	510
800	190	990	930	4-M45	130	860	580
900	203	1090	1030	4-M45	140	900	630
1000	216	1210	1140	4-M52	140	980	700
1200	254	1420	1350	4-M52	170	1100	810
1400	279	1640	1560	4-M56	180	1200	930
1600	318	1860	1780	4-M56	190	1330	980
1800	356	2070	1985	4-M64	200	1450	1050
2000	406	2300	2210	4-M64	200	1560	1150

Wafer Type Triple Offset Butterfly Valve

对夹式三偏心蝶阀

外形及连接尺寸 Appearance and connect size (mm) PN40

公称直径 Nominal diameter	L	D1	D2	N-d	H	H1	H2
50	43	125	102	4-18	50	200	75
80	64	160	138	4-18	50	226	98
100	64	190	162	4-22	55	250	130
125	70	220	188	4-26	60	295	165
150	76	250	218	4-26	65	315	175
200	89	320	285	4-M27	65	380	220
250	114	385	345	4-M30	70	405	250
300	114	450	410	4-M30	70	480	300
350	127	510	465	4-M33	100	545	330
400	140	585	535	4-M36	100	550	360
450	152	610	560	4-M36	105	620	380
500	159	670	615	4-M39	105	680	410
600	181	795	735	4-M45	110	750	460

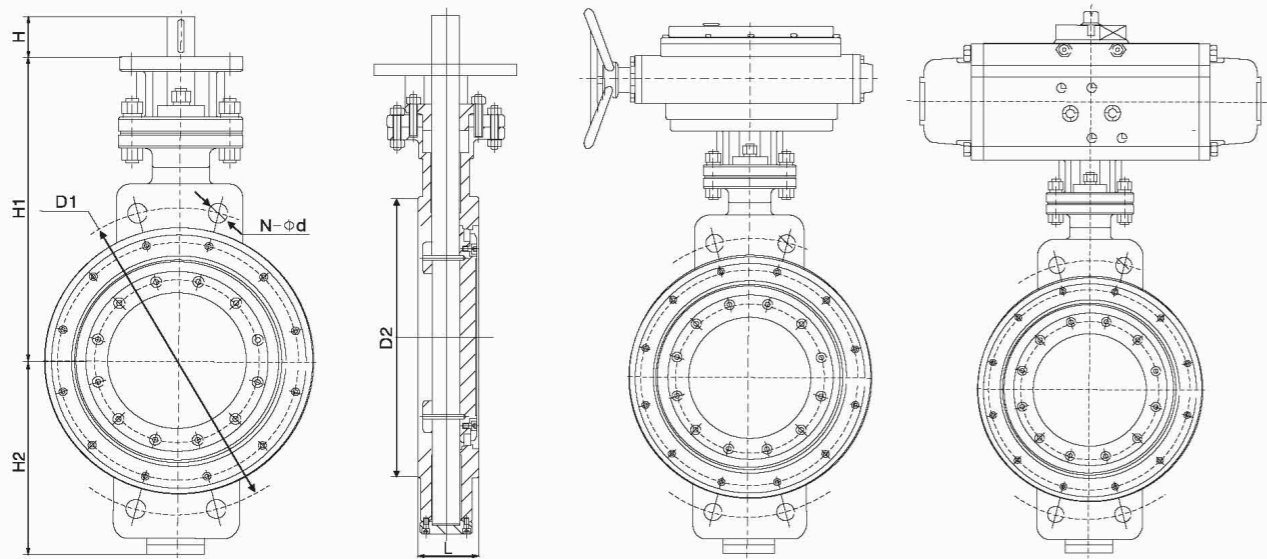
外形及连接尺寸 Appearance and connect size (mm) PN63

公称直径 Nominal diameter	L	D1	D2	N-d	H	H1	H2
50	43	135	102	4-22	50	200	75
80	64	170	138	4-22	50	226	98
100	64	200	162	4-26	55	250	130
125	70	240	188	4-30	65	295	165
150	76	280	218	4-33	65	315	175
200	89	345	285	4-M33	70	380	220
250	114	400	345	4-M33	70	405	250
300	114	460	410	4-M33	100	480	300
350	127	525	465	4-M36	100	545	330
400	140	585	535	4-M39	105	550	360
500	170	705	615	4-M45	110	680	410
600	200	820	735	4-M52	110	750	460



Wafer Type Triple Offset Butterfly Valve

对夹式三偏心蝶阀



外形及连接尺寸 Appearance and connect size

CLASS 150 Lb

公称通径 Nominal diameter		L	D1	D2	N-d	H	H1	H2
2	50	43	120.5	92	4-19	50	200	75
3	80	49	152.5	127	4-19	50	230	110
4	100	54	190.5	157	4-19	50	265	135
5	125	57	216	186	4-22	55	325	155
6	150	58	241.5	216	4-22	60	345	185
8	200	64	298.5	270	4-22	65	395	225
10	250	71	362	324	4-25	65	425	255
12	300	81	432	381	4-25	70	495	305
14	350	92	476	413	4-29	70	555	325
16	400	102	540	470	4-(1)	100	590	360
18	450	114	578	533	4-(1-1/8)	100	630	370
20	500	127	635	584	4-(1-1/8)	105	700	410
24	600	154	749.5	692	4-(1-1/4)	105	750	480
28	700	165	795.3	762	8-(3/4)	110	830	550
32	800	190	900.1	864	8-(3/4)	130	950	600
36	900	203	1009.6	972	8-(7/8)	140	1000	660
40	1000	216	1120.8	1080	8-(1)	140	1080	640
48	1200	254	1335.1	1289	8-(1-1/8)	170	1250	830

Wafer Type Triple Offset Butterfly Valve

对夹式三偏心蝶阀

外形及连接尺寸 Appearance and connect size

CLASS 300 Lb

公称通径 Nominal diameter		L	D1	D2	N-d	H	H1	H2
2	50	43	127	92	4-19	50	250	135
3	80	49	168.5	127	4-22	50	270	150
4	100	54	200	157	4-22	55	305	185
5	125	57	235	186	4-22	65	345	185
6	150	59	270	216	4-(3/4)	65	380	210
8	200	73	330	270	4-(7/8)	70	410	240
10	250	83	387.5	324	4-(1)	70	470	280
12	300	92	451	381	4-(1-1/8)	100	545	315
14	350	117	514.5	413	4-(1-1/8)	100	590	350
16	400	133	571.5	470	4-(1-1/4)	105	640	350
18	450	149	628.5	533	4-(1-1/4)	110	690	410
20	500	159	686	584	4-(1-1/4)	110	740	460
24	600	181	813	692	4-(1-1/2)	130	850	510
28	700	229	857.2	787	4-(1-1/4)	140	980	430
32	800	241	977.9	902	4-(1-1/2)	170	1080	455
36	900	241	1089	1010	4-(1-5/8)	170	1110	475
40	1000	300	1190.6	1114	4-(1-5/8)	190	1150	455
48	1200	360	1416	1327	4-(1-7/8)	190	1410	860

外形及连接尺寸 Appearance and connect size

CLASS 600 Lb

公称通径 Nominal diameter		L	D1	D2	N-d	H	H1	H2
2	50	43	127	92	4-(5/8)	55	175	125
3	80	54	168.5	127	4-(3/4)	55	414	127
4	100	64	216	157	4-(7/8)	60	447	160
5	125	70	266	186	4-(1)	65	395	285
6	150	78	292	216	4-(1)	70	490	196
8	200	102	349	270	4-(1-1/8)	70	536	221
10	250	117	432	324	4-(1-1/4)	70	641	256
12	300	140	489	381	4-(1-1/4)	100	727	307
14	350	155	527	413	4-(1-3/8)	100	757	330
16	400	178	603	470	4-(1-1/2)	110	825	391
18	450	200	654	533	4-(1-5/8)	110	840	400
20	500	216	724	584	4-(1-5/8)	130	978	352
24	600	232	838	692	4-(1-7/8)	140	1070	513

LUG Type Triple Offset Butterfly Valve

凸耳式三偏心蝶阀



Breakthrough technology, creating value!

突破科技 创造价值!

我们时刻追求，设计的创新；我们永远确保，品质的优良；我们不断完善，周全的服务。
We always seek, design innovation; we always ensure that the quality of good; we continue to improve, comprehensive service.

LUG Type Triple Offset Butterfly Valve

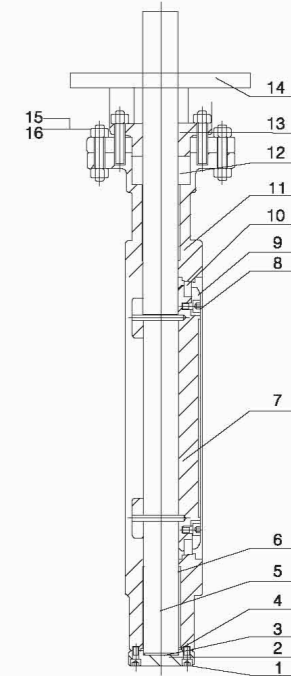
凸耳式三偏心蝶阀

应用规范 Application Of Norms

设计标准：API609、JB/8527、DIN2559、EN593
Design standard: API609、JB/8527、DIN2559、EN593

产品范围 Product range

- 1、压力范围：CLASS 150Lb-1500Lb PN6-PN150
 - 2、公称通径：NPS 2-80" DN50-2000mm
 - 3、主体材料：碳钢、不锈钢、双相不锈钢、合金钢、镍合金钢
 - 4、连接形式：凸耳式
 - 5、工作温度：-29℃-350℃
 - 6、操作方式：手柄、蜗轮、电动装置、气动装置、液动装置、气液联动装置；
- 1, Pressure range: CLASS 150Lb-1500Lb PN6-PN150
2, Nominal diameter: NPS 2-80" DN50-2000mm
3, Main material: carbon steel, stainless steel, duplex stainless steel, alloy steel, nickel alloy steel
4, Connection form: lug type
5, Working temperature: -29℃ ~ 350℃
6, Operation mode: handle, worm gear, electric device, pneumatic device, hydraulic device, Gas-liquid linkage device;

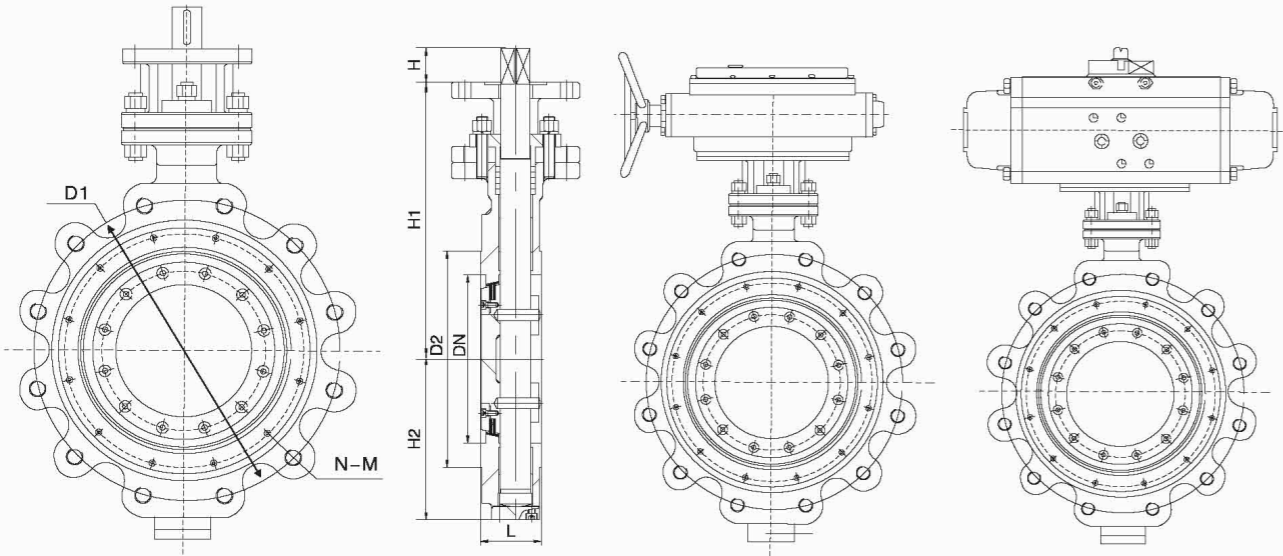


主要零件材料 Material for main parts

序号 Serial number	零件名称 Part name	材料 Material Science
1	螺钉 Screw	B8M-CL2
2	法兰 Flange	SS316
3	垫片 Gasket	SS316+石墨 Graphite
4	防冲出环 Anti surge ring	S31803
5	阀杆 Stem	17-4PH
6	轴套 Axle sleeve	S31803
7	蝶板 Disc	CF8M
8	内六角螺钉 Inner six angle screw	SS316
9	蝶板压环 Retaining Ring	SS316
10	密封圈 Seal ring	SS316+石墨 Graphite
11	阀体 Body	CF8M
12	填料 Packing	石墨 Graphite
13	压盖 Gland	CF8M
14	支架 Bracket	A216WCB
15	螺栓 Bolt	B8M-CL2
16	螺母 Nut	8M-CL2

LUG Type Triple Offset Butterfly Valve

凸耳式三偏心蝶阀



外形及连接尺寸 Appearance and connect size (mm) PN10

公称通径 Nominal diameter	L	D1	D2	H	H1	H2	N-d
80	49	160	132	50	310	75	8-18
100	56	180	156	50	325	110	8-18
125	64	210	184	50	360	135	8-18
150	70	240	211	55	395	155	8-22
200	71	295	266	60	480	185	8-22
250	76	350	319	65	550	225	12-22
300	83	400	370	65	610	255	12-22
350	92	460	429	70	710	305	16-22
400	102	515	480	70	755	325	16-26
450	114	565	530	100	835	360	20-26
500	127	620	582	100	900	370	20-26
600	154	725	682	105	1060	410	20-30
700	165	840	794	105	1170	480	24-30
800	190	950	901	110	1320	550	24-33
900	203	1050	1001	130	1440	600	28-33
1000	216	1160	1112	140	1640	660	28-36
1200	254	1380	1328	140	1720	640	32-39
1400	390	1590	1530	170	2010	830	36-42
1600	440	1820	1750	180	2255	980	40-48
1800	490	2020	1950	190	2480	1050	44-48
2000	540	2230	2150	190	2660	1150	48-48

LUG Type Triple Offset Butterfly Valve

凸耳式三偏心蝶阀

外形及连接尺寸 Appearance and connect size (mm) PN16

公称通径 Nominal diameter	L	D1	D2	H	H1	H2	N-d
80	49	160	132	50	310	75	8-18
100	56	180	156	50	325	110	8-18
125	64	210	184	50	360	135	8-18
150	70	240	211	55	395	155	8-22
200	71	295	266	60	480	185	12-22
250	76	355	319	65	550	225	12-26
300	83	410	370	65	610	255	12-26
350	92	470	429	70	710	305	16-26
400	102	525	480	70	755	325	16-30
450	114	585	548	100	835	360	20-30
500	127	650	609	100	900	370	20-33
600	154	770	720	105	1060	410	20-36
700	165	840	794	105	1170	480	24-36
800	190	950	901	110	1320	550	24-39
900	203	1050	1001	130	1440	600	28-39
1000	216	1170	1112	140	1640	660	28-42
1200	254	1390	1328	140	1850	640	32-48
1400	390	1590	1530	170	2040	830	36-48
1600	440	1820	1750	180	2280	980	40-55
1800	490	2020	1950	190	2495	1050	44-55
2000	540	2230	2150	190	2685	1150	48-60

外形及连接尺寸 Appearance and connect size (mm) PN25

公称通径 Nominal diameter	L	D1	D2	H	H1	H2	N-d
80	49	160	132	50	310	135	8-18
100	56	190	156	50	325	150	8-22
125	64	220	184	55	360	185	8-26
150	70	250	211	65	395	185	8-26
200	71	310	274	65	480	210	12-26
250	76	370	330	70	550	240	12-30
300	83	430	389	70	610	280	16-30
350	92	490	448	100	710	315	16-33
400	102	550	503	100	755	350	16-36
450	114	600	548	105	835	350	20-36
500	127	660	609	110	900	410	20-36
600	154	770	720	110	1060	460	20-39
700	165	875	820	130	1170	510	24-42
800	190	990	928	140	1320	430	24-48
900	203	1090	1028	170	1440	455	28-48
1000	216	1210	1140	170	1640	475	28-55
1200	254	1420	1350	190	1850	455	32-55
1400	390	1640	1560	190	2040	860	36-60

LUG Type Triple Offset Butterfly Valve

凸耳式三偏心蝶阀

外形及连接尺寸 Appearance and connect size (mm) PN40

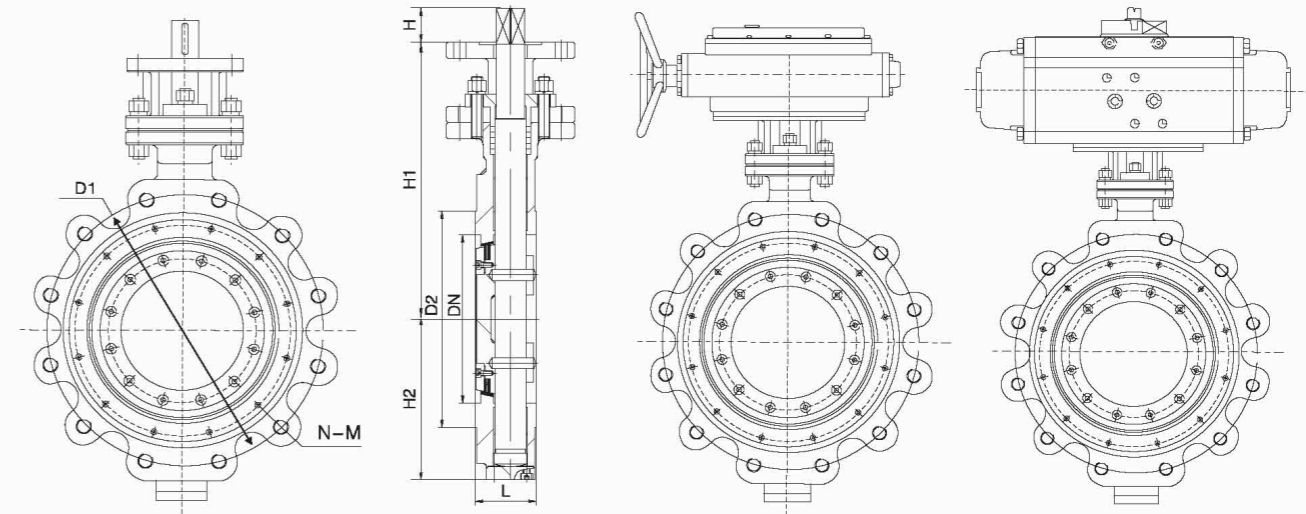
公称通径 Nominal diameter	L	D1	D2	H	H1	H2	N-d
80	49	160	132	50	310	135	8-18
100	56	190	156	50	325	150	8-22
125	64	220	184	55	360	185	8-26
150	70	250	211	65	395	185	8-26
200	71	320	284	65	515	210	12-30
250	76	385	345	70	675	240	12-33
300	83	450	409	70	805	280	16-33
350	92	510	465	100	850	315	16-36
400	102	585	535	100	895	350	16-39
450	152	610	560	105	960	350	20-39
500	159	670	615	110	1030	410	20-42
600	181	795	735	110	1180	460	20-48

外形及连接尺寸 Appearance and connect size (mm) PN63

公称通径 Nominal diameter	L	D1	D2	H	H1	H2	N-d
80	64	170	132	55	310	125	8-22
100	64	200	156	55	325	127	8-26
125	70	240	184	60	360	160	8-30
150	76	280	211	65	430	285	8-33
200	89	345	284	70	535	196	12-36
250	114	400	345	70	695	221	12-36
300	114	460	409	70	805	256	16-36
350	127	525	465	100	880	307	16-39
400	140	585	535	100	930	330	16-42
450	160	630	560	110	990	391	20-42
500	170	705	615	110	1050	400	20-48
600	200	820	735	130	1230	352	20-56

LUG Type Triple Offset Butterfly Valve

凸耳式三偏心蝶阀



外形及连接尺寸 Appearance and connect size CLASS 150 Lb

公称通径 Nominal diameter	L	D1	D2	N-d	H	H1	H2
2	50	43	120.5	4-(5/8)	50	200	75
3	80	49	152.5	4-(5/8)	50	230	110
4	100	54	190.5	8-(5/8)	50	265	135
5	125	57	216	8-(3/4)	55	325	155
6	150	58	241.5	8-(3/4)	60	345	185
8	200	64	298.5	8-(3/4)	65	395	225
10	250	71	362	12-(7/8)	65	425	255
12	300	81	432	12-(7/8)	70	495	305
14	350	92	476	12-(1)	70	555	325
16	400	102	540	16-(1)	100	590	360
18	450	114	578	16-(1-1/8)	100	630	370
20	500	127	635	20-(1-1/8)	105	700	410
24	600	154	749.5	20-(1-1/4)	105	750	480
28	700	165	795.3	40-(3/4)	110	830	550
32	800	190	900.1	48-(3/4)	130	950	600
36	900	203	1009.6	44-(7/8)	140	1000	660
40	1000	216	1120.8	44-(1)	140	1080	640
48	1200	254	1335.1	44-(1-1/8)	170	1250	830

LUG Type Triple Offset Butterfly Valve

凸耳式三偏心蝶阀

外形及连接尺寸 Appearance and connect size CLASS 300 Lb

公称通径 Nominal diameter		L	D1	D2	N-d	H	H1	H2
2	50	43	127	92	8-(5/8)	50	250	135
3	80	49	168.5	127	8-(3/4)	50	270	150
4	100	54	200	157	8-(3/4)	55	305	185
5	125	57	235	186	8-(3/4)	65	345	185
6	150	59	270	216	12-(3/4)	65	380	210
8	200	73	330	270	12-(7/8)	70	410	240
10	250	83	387.5	324	16-(1)	70	470	280
12	300	92	451	381	16-(1-1/8)	100	545	315
14	350	117	514.5	413	20-(1-1/8)	100	590	350
16	400	133	571.5	470	20-(1-1/4)	105	640	350
18	450	149	628.5	533	24-(1-1/4)	110	690	410
20	500	159	686	584	24-(1-1/4)	110	740	460
24	600	181	813	692	24-(1-1/2)	130	850	510
28	700	229	857.2	787	36-(1-1/4)	140	980	430
32	800	241	977.9	902	32-(1-1/2)	170	1080	455
36	900	241	1089	1010	32-(1-5/8)	170	1110	475
40	1000	300	1190.6	1114	40-(1-5/8)	190	1150	455
48	1200	360	1416	1327	40-(1-7/8)	190	1410	860

外形及连接尺寸 Appearance and connect size CLASS 600 Lb

公称通径 Nominal diameter		L	D1	D2	N-d	H	H1	H2
2	50	43	127	92	8-(5/8)	55	175	125
3	80	54	168.5	127	8-(3/4)	55	414	127
4	100	64	216	157	8-(7/8)	60	447	160
5	125	70	266	186	8-(1)	65	395	285
6	150	78	292	216	12-(1)	70	490	196
8	200	102	349	270	12-(1-1/8)	70	536	221
10	250	117	431	324	16-(1-1/4)	70	641	256
12	300	140	489	381	20-(1-1/4)	100	727	307
14	350	155	527	413	20-(1-3/8)	100	757	330
16	400	178	603	470	20-(1-1/2)	110	825	391
18	450	200	654	533	20-(1-5/8)	110	840	400
20	500	216	724	584	24-(1-5/8)	130	978	352
24	600	232	838	692	24-(1-7/8)	140	1070	513

Butt Welding Triple Offset Butterfly Valve

对焊式三偏心蝶阀



Breakthrough technology, creating value!

突破科技 创造价值!

我们时刻追求，设计的创新；我们永远确保，品质的优良；我们不断完善，周全的服务。
We always seek, design innovation; we always ensure that the quality of good; we continue to improve, comprehensive service.

Butt Welding Triple Offset Butterfly Valve

对焊式三偏心蝶阀

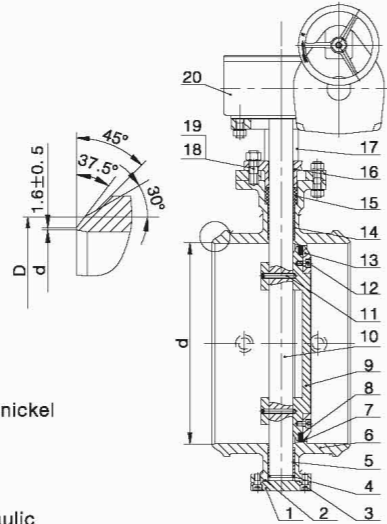
应用规范 Application Of Norms

设计标准: API609、JB/8527
 Design standard: API609、JB/8527

产品范围 Product range

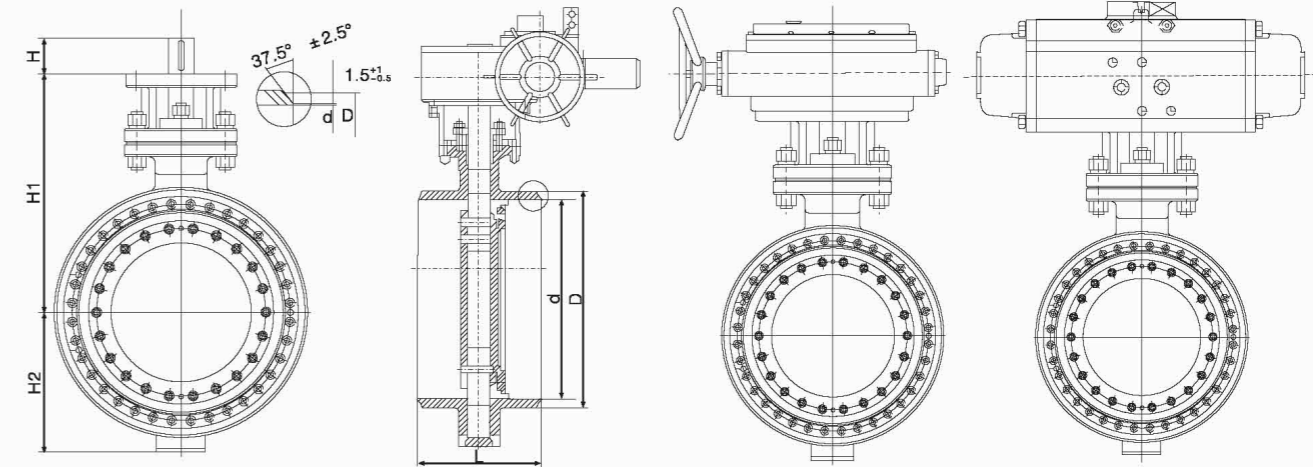
- 1、压力范围: CLASS 150Lb-1500Lb PN6-PN150
- 2、公称口径: NPS 2-180" DN50-2000mm
- 3、主体材料: 碳钢、不锈钢、双相不锈钢、合金钢、镍合金钢
- 4、连接形式: 对焊式
- 5、工作温度: -29°C~350°C
- 6、操作方式: 手柄、蜗轮、电动装置、气动装置、液动装置、气液联动装置;

- 1, Pressure range: CLASS 150Lb-1500Lb PN6-PN150
- 2, Nominal diameter: NPS 2-180" DN50-2000mm
- 3, Main material: carbon steel, stainless steel, duplex stainless steel, alloy steel, nickel alloy steel
- 4, Connection form: butt welding type
- 5, Working temperature: -29°C ~ 350°C
- 6, Operation mode: handle, worm gear, electric device, pneumatic device, hydraulic device, Gas-liquid linkage device;



Butt Welding Triple Offset Butterfly Valve

对焊式三偏心蝶阀



主要零件材料 Material for main parts

序号NO.	零件名称 Part name	材料 Material Science
1	后端盖 Rear end cover	A105
2	密封垫 Gasket	石墨 Graphite
3	内六角螺栓 Inner six angle bolt	A194 B7
4	对开环 Ring opening	304
5	下轴套 Lower bushing	自润滑轴承 Self-lubricating bearing
6	阀体 Valve body	WCB
7	阀体密封面 Body sealing face	1Cr18Ni9Ti
8	蝶板密封圈 Disc Seal Ring	SS304 + graphite
9	蝶板 Disc	WCB
10	阀杆 Stem	2Cr13
11	锥销 Taper pin	2Cr13
12	内六角螺栓 Inner six angle bolt	A194B7
13	蝶板压盖 Butterfly gland	Q235
14	上轴套 Upper shaft sleeve	自润滑轴承 Self-lubricating bearing
15	填料 Packing	柔性石墨 Flexible graphite
16	填料压盖 Packing gland	WCB
17	支架 Bracket	WCB
18	螺栓 Bolt	A194 B7
19	螺母 Nut	A193 2H
20	蜗轮装置 Worm gear	组件 Assembly

外形及连接尺寸 Appearance and connect size (mm)

PN16

公称口径 Nominal diameter	L	d	D	H	H1	H2
80	180	78	90	50	225	80
100	190	96	110	50	250	115
125	200	121	135	55	295	130
150	210	146	161	60	310	145
200	230	202	222	65	380	175
250	250	255	278	65	400	210
300	270	303	330	70	460	235
350	290	351	382	70	510	270
400	310	398	432	100	545	300
450	330	450	484	100	620	330
500	350	501	535	105	650	370
600	390	602	636	105	680	430
700	430	692	726	110	780	470
800	470	792	826	130	860	530
900	510	892	926	140	900	580
1000	550	992	1028	140	980	650
1200	630	1192	1228	170	1100	765
1400	710	1392	1428	180	1200	890

Butt Welding Triple Offset Butterfly Valve

对焊式三偏心蝶阀

外形及连接尺寸 Appearance and connect size (mm) PN25

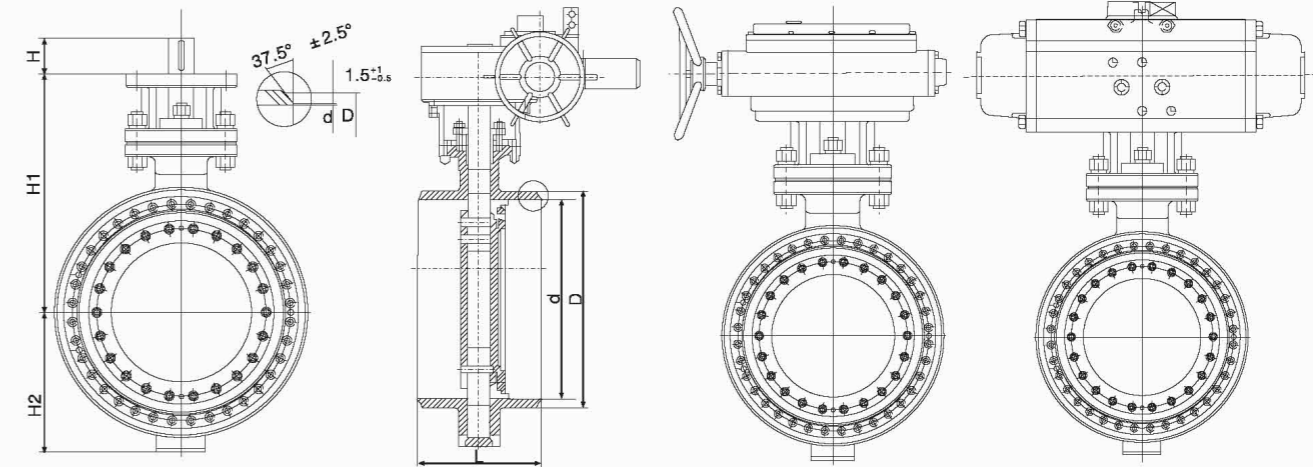
公称通径 Nominal diameter	L	d	D	H	H1	H2
80	180	78	90	50	225	80
100	190	96	110	50	250	115
125	200	121	135	55	295	130
150	210	146	161	60	310	145
200	230	202	222	65	380	175
250	250	255	278	65	400	210
300	270	303	330	70	460	235
350	290	351	382	70	510	270
400	310	398	432	100	545	300
450	330	450	484	100	620	330
500	350	501	535	105	650	370
600	390	602	636	105	680	430
700	430	692	726	110	780	470
800	470	792	826	130	860	530
900	510	892	926	140	900	580
1000	550	992	1028	140	980	650
1200	630	1192	1228	170	1100	765
1400	710	1392	1428	180	1200	890

外形及连接尺寸 Appearance and connect size (mm) PN40

公称通径 Nominal diameter	L	d	D	H	H1	H2
80	180	78	90	50	225	80
100	190	96	110	55	250	115
125	200	120	135	60	295	130
150	210	145	161	65	310	145
200	230	200	222	65	380	175
250	250	252	278	70	400	210
300	270	301	330	70	460	235
350	290	351	382	100	510	270
400	310	398	432	100	545	300
450	330	448	484	105	620	330
500	350	495	535	105	650	370
600	390	595	636	110	680	430

Butt Welding Triple Offset Butterfly Valve

对焊式三偏心蝶阀



外形及连接尺寸 Appearance and connect size CLASS 150 Lb

公称通径 Nominal diameter	L	d	D	H	H1	H2	
3	80	180	77.9	88.9	50	195	80
4	100	190	102.3	114.3	50	225	115
5	125	200	128.2	139.7	55	250	130
6	150	210	154.1	168.3	60	285	145
8	200	230	202.7	219.1	65	330	175
10	250	250	254.5	273	65	360	210
12	300	270	304.8	323.9	70	420	235
14	350	290	336.6	355.6	70	460	270
18	400	310	387.4	406.4	100	490	300
18	450	330	434.9	457	100	525	330
20	500	350	482.6	508	105	580	370
24	600	390	581.1	610	105	640	430
28	700	430	672.7	711.2	110	660	470
32	800	470	770.7	812.8	130	715	530
36	900	510	869.3	914.4	140	780	580
40	1000	550	967.3	1016	140	830	650
48	1200	630	1164	1219.2	170	960	765

Butt Welding Triple Offset Butterfly Valve

对焊式三偏心蝶阀

外形及连接尺寸 Appearance and connect size CLASS 300 Lb

公称通径 Nominal diameter		L	d	D	H	H1	H2
3	80	180	77.9	88.9	50	205	80
4	100	190	102.3	114.3	55	230	115
5	125	200	128.2	139.7	65	250	130
6	150	210	154.1	168.3	65	310	145
8	200	230	202.7	219.1	70	345	175
10	250	250	254.5	273	70	395	210
12	300	270	304.8	323.9	100	450	235
14	350	290	336.6	355.6	100	490	270
18	400	310	387.4	406.4	105	530	300
18	450	330	434.9	457	110	580	330
20	500	350	482.6	508	110	630	370
24	600	390	581.1	610	130	710	430
28	700	430	672.7	711.2	140	720	470
32	800	470	770.7	812.8	170	780	530
36	900	510	869.3	914.4	170	860	580
40	1000	550	967.3	1016	190	930	650
48	1200	630	1164	1219.2	190	1080	765

外形及连接尺寸 Appearance and connect size CLASS 600 Lb

公称通径 Nominal diameter		L	d	D	H	H1	H2
3	80	180	77.9	88.9	55	235	127
4	100	190	102.3	114.3	60	270	160
5	125	200	128.2	139.7	65	315	285
6	150	210	154.1	168.3	70	340	196
8	200	230	198.5	219.1	70	390	221
10	250	250	247.7	273	70	450	256
12	300	270	295.3	323.9	100	500	307
14	350	290	325.4	355.6	100	530	330
18	400	310	363.5	406.4	110	600	391
18	450	330	409.5	457	110	630	400
20	500	350	455.6	508	130	670	352
24	600	390	547.7	610	140	730	513

Soft Sealing Concentric Butterfly Valve

软密封中线蝶阀



Breakthrough technology, creating value!

突破科技 创造价值!

我们时刻追求，设计的创新；我们永远确保，品质的优良；我们不断完善，周全的服务。
We always seek, design innovation; we always ensure that the quality of good; we continue to improve, comprehensive service.

Soft Sealing Concentric Butterfly Valve

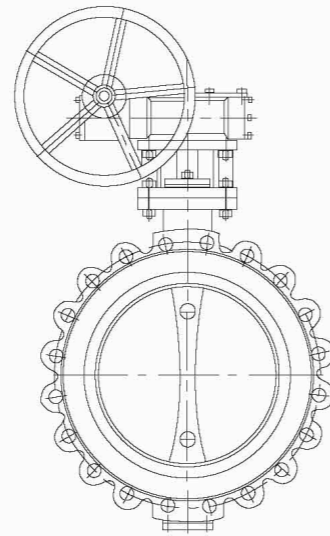
软密封中线蝶阀

应用规范 Application Of Norms

设计标准: API609 AWWA C504
Design criteria: API609, AWWA, C504

产品范围 Product range

- 1、压力范围: CLASS 125LB-150LB
 - 2、公称口径: NPS 2-40"
 - 3、主体材料: 碳钢、不锈钢、双相不锈钢、合金钢、镍合金钢
 - 4、连接形式: 法兰式 对夹式 凸耳式
 - 5、操作方式: 手柄、蜗轮、电动装置、气动装置 液动装置、气液联动装置;
- 1, Pressure range: CLASS 125LB-150LB
 - 2, Nominal diameter: NPS 2-40"
 - 3, Main material: carbon steel, stainless steel, duplex stainless steel, alloy steel, nickel alloy steel
 - 4, Connection form: flange type, wafer type, lug type
 - 5, Operation mode: handle, worm gear, electric device, pneumatic device, hydraulic device, Gas-liquid linkage device;



主要技术参数 Main technical parameters

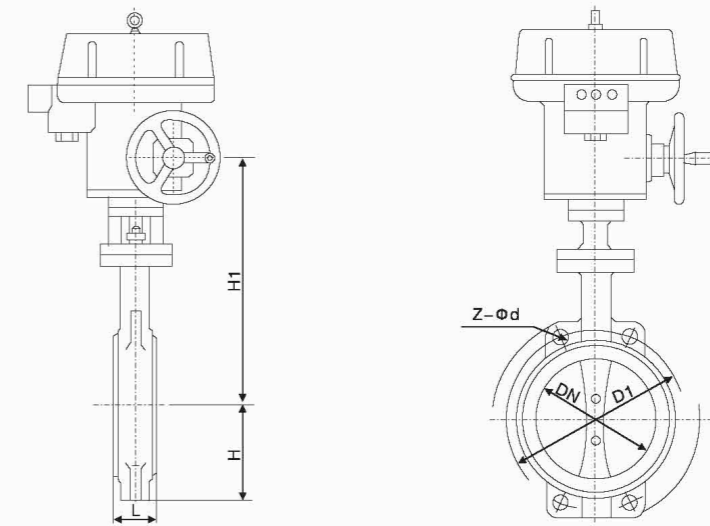
公称口径 Nominal diameter	DN(mm)	50~2000		
公称压力 Nominal pressure	PN(MPa)	0.6	1.0	1.6
试验压力(MPa) Test pressure	强度试验 Strength test	0.9	1.5	2.4
	密封试验 Seal test	0.66	1.1	1.76
	气密封试验 Air tight test	0.6	0.6	0.6
适用介质 Applicable medium	空气、水、污水、水蒸气、煤气、油品等 Air, water, sewage, water vapor, gas, oil, etc.			
驱动形式 Driving form	手动、蜗杆蜗轮传动、气传动、电传动 Manual, worm and worm gear transmission, gas transmission, electric drive			

密封材料和适用温度 Sealing material and applicable temperature

材料品种 Variety of materials	氯丁橡胶 Chloride butyl rubber	丁腈橡胶 Nitrile rubber	乙丙橡胶 Ethylene propylene rubber	聚四氟乙烯 Teflon	硅橡胶 silicon rubber	氟橡胶 Fluorine rubber
代号 Code	X或J	XA或JA	XB或JB	XC、JC或F	XD或JD	Xe或JE
耐最高温度 Maximum temperature resistance	82°C	93°C	150°C	232°C	250°C	250°C
耐最低温度 Minimum temperature resistance	-40°C	-40°C	-40°C	-268°C	-70°C	-23°C
适用工作温度 Applicable operating temperature	≤65°C	≤80°C	≤120°C	≤200°C	≤200°C	≤180°C

Wafer Soft Seated Butterfly Valve

对夹软密封蝶阀



外形及连接尺寸 Appearance and connect size

公称口径 Nominal Diameter		主要尺寸 Main Dimension		0.25MPa~0.6MPa			1.0MPa			1.6MPa			
mm	inch	L	H	H1	D1	Z-Φ(M)d	a	D1	Z-Φ(M)d	a	D1	Z-Φ(M)d	a
50	2	43	80	160	110	4-14	45°	125	4-18	45°	125	4-18	45°
65	2 1/2	46	88	175	130	4-14	45°	145	4-18	45°	145	4-18	45°
80	3	46	96	180	150	4-18	22° 30'	160	4-18	22° 30'	160	4-18	22° 30'
100	4	52	115	200	170	4-18	22° 30'	180	4-18	22° 30'	180	4-18	22° 30'
125	5	56	125	213	200	4-18	22° 30'	210	4-18	22° 30'	210	4-18	22° 30'
150	6	56	140	225	225	4-18	22° 30'	240	4-23	22° 30'	240	4-23	22° 30'
200	8	60	175	260	280	4-18	22° 30'	295	4-23	22° 30'	295	4-23	15°
250	10	68	202	290	335	4-18	15°	350	4-23	15°	355	4-25	15°
300	12	78	242	330	395	4-23	15°	400	4-23	15°	410	4-25	15°
350	14	78	266	360	445	4-23	11° 15'	460	4-23	11° 15'	470	4-25	11° 15'
400	16	102	298	390	495	4-23	11° 15'	515	4-25	11° 15'	525	4-30	11° 15'
450	18	114	315	710	550	4-23	9°	565	4-25	9°	585	4-30	9°
500	20	127	348	430	600	4-23	9°	620	4-25	9°	650	4-34	9°
600	24	154	400	490	705	4-25	9°	725	4-30	9°	770	4-41	9°
700	28	165	520	550	810	4-25	7° 30'	840	4-M27	7° 30'	840	4-M36	7° 30'
800	32	190	591	610	920	4-30	7° 30'	950	4-M30	7° 30'	950	4-M36	7° 30'
900	36	203	660	680	1020	4-M27	6° 26'	1050	4-M30	6° 26'	1050	4-M36	6° 26'
1000	40	216	670	730	1120	4-M27	6° 26'	1160	4-M30	6° 26'	1170	4-M42	6° 26'
1200	48	254	780	835	1340	4-M30	5° 38'	1380	4-M36	5° 38'	1390	4-M45	5° 38'
1400	56	279	950	985	1560	4-M33	-	-	-	-	-	-	-